

1001 CHERRY ST.

CREIGHTON Nebraska

\$119,000

3-BEDROOM RANCH HOME



Approximate Room Measurements:

Master Bedroom: 13 x 13.5

Bedroom #2: 10 x 13.5

Bedroom #3: 10.5 x 10.5

Kitchen: 17 x 10

Dining Room: 8.5 x 13.5

Living Room: 13.5 x 21

Laundry Room: 5.5 x 6

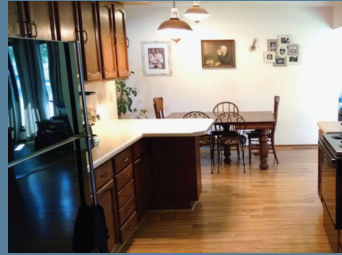
Sun Room: 9.5 x 14

Base square footage: 1472 sq. ft.

Lot Size: 75 x 150

Built in 1977

Taxes: \$1,309/year



Motivated seller on this 3-bedroom, ranch style home that sits on a large corner lot in a quiet neighborhood at the corner of Cherry and Clark streets. The home features, 2 1/2 baths, a sunroom, attached 2-stall garage, main floor laundry, fenced yard and many interior updates.

View more photos online: www.brunslandandhomellc.com



P.O. Box 250 • 212 North Broadway | Bloomfield, NE 68718

Phone: 402-373-2727 • Mobile: 402-841-7320 • Fax 402-373-2707

Kelly Bruns, Broker 402-841-7320

Website: brunslandandhomellc.com

